

FOCUS ON OATLEY

A weird mob still gathers at the local

OATLEY Hotel opened in 1928 and it soon became a "high society" rendezvous at the then end of the railway line.

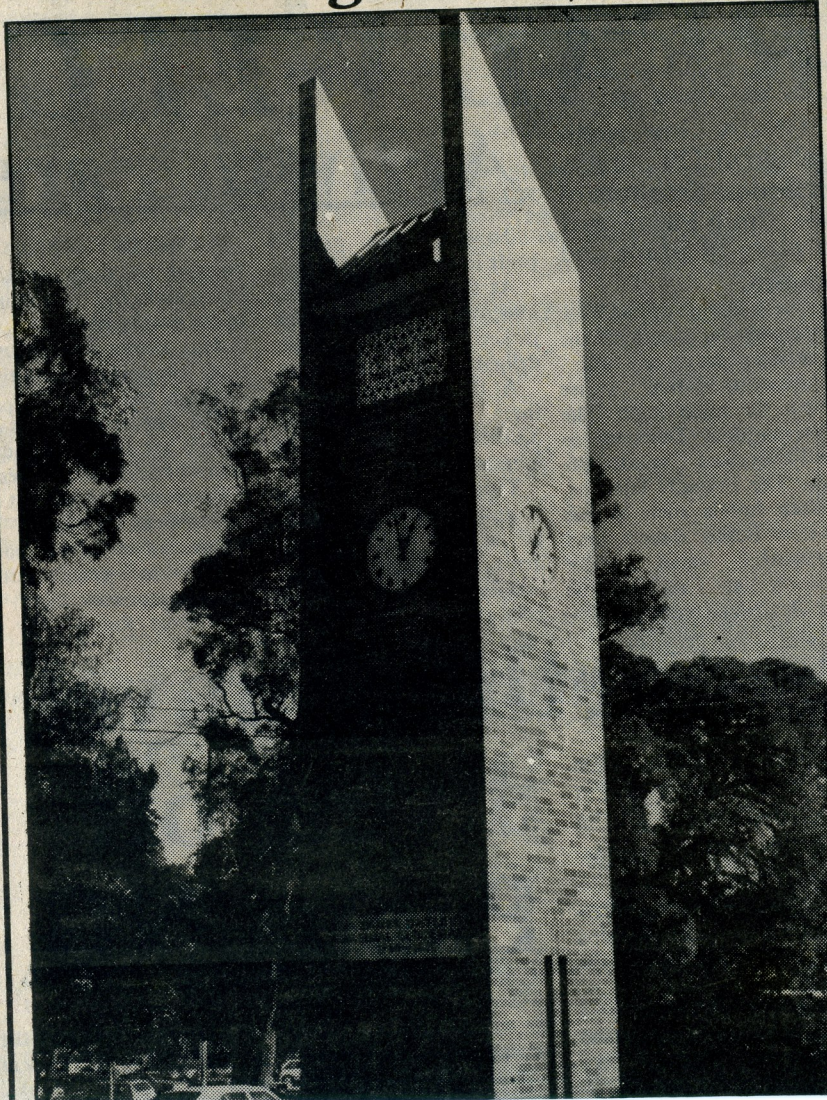
John O'Grady, better known under his pen name of Nino Colluta (They're a Weird Mob), lived at the hotel for a period when he was a bricklayer.

Many of his book's characters came from people he met at the hotel.

On cold winter's days, the open fire at the Oatley Hotel is a great attraction and customers can stop awhile to have a chat with the pub's official beer taster, still going strong at the age of 70.

Oatley Hotel — still a country pub after nearly 60 years.

A fitting memorial



*How do you feel mate?
Like a beer mate,
But it's cold outside!
Let's go down to the Oatley Pub,
they've got a big open fire.
"Ya got me, let's go!"*

OATLEY HOTEL

Oatley Ave. OATLEY.

Marketing careers

THE ANNUAL Oatley plays are at the market, Careers Market is being held with a wide variety of careers at St George Institution of Education until the end of today (Wednesday). Some 10,000 students from 43 secondary schools highlighted.

About 90 stalls and dis- in the region have attended.

gardenscape NURSERY

101 MULGA RD. DATLEY WEST
570-3743

OPEN 6 DAYS
(CLOSED TUES)

INDOOR: Plants, seeds, cane & ceramic planters fertiliser, flowering plants, potting mix, chemicals etc.

OUTDOOR: Trees, shrubs, conifers, seedlings, ferns & shade plants, natives, palms, groundcovers etc.

*Professional Advice by
qualified horticulturalist*

BRAD FIELDING

THE GOURMET SHOP

Mon. - Sat.
9am - 6.30pm
Fri.: 9am - 7.30pm
Sun.: 9am - 2pm



THIS WEEK ONLY!
CHICKEN PIES \$1.00

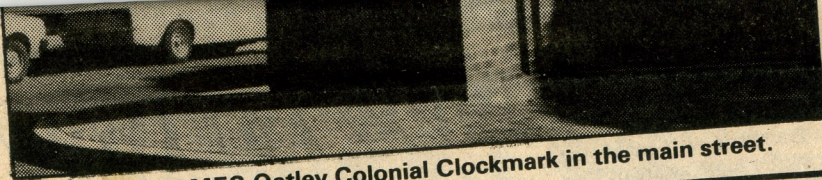
Shepherd's Butchery

Quality Meat at Budget Prices!



16 Frederick Street,
OATLEY

57 3507



□ THE JAMES Oatley Colonial Clockmark in the main street.

A bargain for travel

HARVEY World Travel has been in Oatley for six years and is part of a 90 outlet chain of travel offices throughout NSW and Queensland.

Harvey World Travel has staff who have been to all the Whitsunday Islands and can

give you up-to-date information and advise you on the island that best suits your holiday needs.

Few places in the world can match the Queensland islands for their sheer enchanting beauty.

The variety of activities on and around the islands offer something for everyone.

There are seven main resort islands in the Whitsunday group: South Molle, Daydream, Hayman, Lindeman, Whitsunday 100, Hamilton and Brampton Islands.

All offer different varieties of accommodation for different types of people.

Whitsunday 100 is ideal for the 18-35's, for singles to meet and rage the whole night long.

Hamilton Island is an island of luxury within everyone's price range.

Mid winter specials start from \$687 a person from Sydney for 8 days/7 nights, including accommodation in the island style bures or the Allamanda units.

EAT IN OR TAKE AWAY!
ALL FOOD HOME-MADE ... COLAS, PIES, HOT PASTA, DELICACIES, COFFEES, SOUPS (VEG.)

23 FREDERICK ST., OATLEY **579 4391**

Hamilton Island Mid-Winter Specials.

With the Resort now complete we want you to experience a new Hamilton Island in 1986.

Effective to 16 August '86

Hamilton Island now has holidays at **GREAT RATES** from Sydney.



You will travel on a direct flight to Hamilton Island, your holiday destination. No time wasted, no transfers, no fuss, your holiday begins the minute you step aboard the direct Ansett flight to Hamilton Island.

From Sydney
7 nights - Bure
\$687
Per Person, Twin Share



Hamilton Island —

The Great Holiday now offers Great Rates

HARVEY WORLD TRAVEL

Departures: Saturday and Sundays only:

**7 FREDERICK STREET
OATLEY 570-5033**



ST GEORGE EXPRESS, Wednesday July 2, 1986 25

OATLEY CELLARS

Cnr. Letitia & Frederick Sts.
Mon. to Sat. 8 am-8pm, Sun 12 noon-7pm

57-2550



McWILLIAMS
CREAM
SHERRY
740ml
\$2.79

LANGWARRA
CASKS
\$4.99

SALTRAM
CHABLIS
\$3.99

JOHNNIE
WALKER
750ml
\$15.99

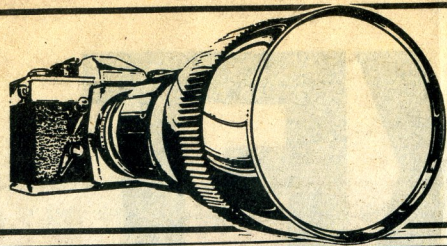


ICE COLD BEERS

FREE HOME DELIVERY
WED TO SAT

SELECTIONS OF SINGLE
MALT WHISKIES
QUALITY WINES STOCKED...

Include: Wolf Blass
Richmond Grove
Krondorf Brown Bros.



FOCUS ON OATLEY

CLOCKMAKER WHO TIMED IT WELL

Given grant of land

Shop to
get help
on paint

SPECIAL KITCHEN OFFER!

FROM O.K.C. FOR LOCAL
RENOVATORS • BUILDERS
• HOME OWNERS

- ★ NOBBY KITCHENS
- ★ ROUND EDGE — SQUARE EDGE
- ★ POLISHED TIMBER EDGE TOPS
- ★ MISTRAL RANGE HOODS

Design Service and Quotes from Plan. Installation arranged or supply only.

OATLEY KITCHEN CENTRE

115 MULGA RD., OATLEY WEST

570 3918

A.H.: 587 0221

OATLEY R.S.L. CLUB

CO-OP LTD.

Letitia Street, Oatley

57-2002

Presents Information for members & guests

**COUNTRY STYLE
ENTERTAINMENT
FRIDAY 4th JULY**

"JARRAH"

SAT. 5th JULY
**COUNTRY
HARMONY**

FREE ... 7.30pm

DON'T MISS OUT THIS TIME

THE SUBURB of Oatley derives its name from James Oatley (1769-1839), an emancipist watch and clock maker who arrived in NSW from Stafford, England, in 1815.

He was committed at Southampton Assizes on March 7, 1814, to transport for life.

His wife, Mary, followed him out as a free settler.

Among the Oatley clocks which survive is the turret clock in Hyde Park prisoners' barracks.

James Oatley started a clockmaking business in George St, Sydney, opposite the Old Burial Ground which was already marked "Full" by 1820.

The Town Hall was built there much later but, during Oatley's life-time, it was a neglected eyesore with pigs rooting amongst the graves.

James Oatley was promised a grant of land by Governor Brisbane, but he had to wait many more years before this promise was

honoured.

He eventually received 70 hectares in the Hurstville district which he developed and farmed successfully.

Two years later on August 31, 1833, Governor Bourke signed an order that Oatley should receive a further 121 hectares in the Parish of St George.

Oatley called it "Needwood Forest."

On present day maps it is bounded by Gungah Bay Rd, Boundary and Hurst-

ville Rds, Oatley Bay and Georges River — almost all the suburb of Oatley!

Instead of "Needwood Forest" this remote, bushy area became known simply as Oatley's Grant.

Two other grants belonging to James Oatley in the Beverly Hills area were developed and farmed while he still kept his Clockmaking business in George St, Sydney.

On October 8, 1839 he died and was buried in a family vault on his farm "Snugsborough."

BRIAN and Pat Harrison of B and P Harrison Hardware Oatley won the 1984 award for the most improved store in the Har-dex chain.

Harrison's Hardware is the one-stop hardware shop in Oatley.

Both Brian and Pat hold painting diplomas so customers can be assured of the best service and advice.

For the home handyman and professional, Harrison's Hardware has a wide range of products.

The store is at 73 Mulga Rd.

Suburb began as holiday home spot

IT is almost certain the first white people to build shelters in present-day Oatley were holiday makers, coming by water and living simply while they fished and relaxed.

Although Captain Cook discovered Georges river and explored the bays and

sand; in short, it is only to be navigated by boats."

For a time the people of Sydney were content to farm

(Salt Pan Creek) "and followed it on foot, walking around the gullies, until they met the salt water which had

OATLEY NEWSAGENCY

MIKE & TONI, CELEBRATING 4 YEARS
IN OATLEY. WISH TO ADVISE THAT
OUR **NEWSPLUS** OFFICE SUPPLIES
SPECIALS HAVE BEEN EXTENDED
UNTIL **14th JULY**

LOTTO UNTIL NOON ON MONDAYS

10% OFF ALL TOYS!

13 FREDERICK ST. OATLEY **57 1288**



Come along and enjoy our Dining Room

Famous, Superb Hong Kong Chef PETER LEUNG

CHINESE BANQUETS A SPECIALTY

"TRY HIS FAMOUS SINGAPORE CHILLI CRAB"

MORE TO COME! LOOK FOR THE ADS

On arrival at Botany Bay Governor Phillip sent a party under P.G. King "up an inlet on the south side five miles."

He found the "country something better than what it was round the Bay" but not any water.

"This river in some parts has good depth and that near and within its entrance, but higher up it is all shoal water, and full of knowls of

to Rose Hill and then the fertile banks of the newly discovered Hawkesbury River.

When visiting Rose Hill in 1789 Governor Phillip "fell in with a fresh water river"

communicating with Botany Bay"

By 1797 settlers were farming alluvial soil areas along the river.

Cheap land at 20c/ft

IN the 1920s land at Oatley Point sold for half-a-crown (20c) a foot.

Just after World War I it was 15 pounds (\$30) a block and still wild rocky scrub.

Before World War II people who liked to hear the leaves falling built mansions without the creature comforts taken for granted nearer the city or made do with holiday homes on spacious blocks of land.

For a long while Oatley was considered so remote that land sales were slow.

Incentives of cheap prices enticed very few buyers away from the comforts of the inner or western suburbs and, as the only secondary industry was Judd's Brickworks (1884-1973) and later a factory in Hurstville Rd producing number plates, the suburb remained a pleasant bushland area.

Electricity was installed in 1923 and on March 1, 1926, the first electric train in NSW ran from Central to Oatley.

This service brought more land buyers; among them Malcolm Butters, who had

come for the fishing first of all and then bought a property in Woonona Pde.

He opened a business as saddler and bootmaker where the Corner Pharmacy is today.

Until 1930 the only paved street was from the station along Frederick St past the shops, to Rosa St.

Joseph's SHOE REPAIRS

14 FREDERICK ST., OATLEY 579 5140
REPAIRS WHILE-U-WAIT

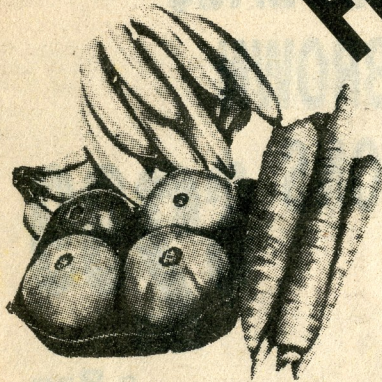
Services Provided:

- ★ All types of Shoe Repairs
- ★ Stitching (shoes, bags, leathersgoods)
- ★ Orthopaedic build-ups
- ★ Key cutting, taps, golf & bowling shoes
- ★ All shoe accessories eg laces, polishes, dyes, inner soles, heel grips etc.

★ ALL WORK GUARANTEED ★

TOM & MARGERET'S

QUALITY FRUIT AND VEGIES BARN (FRESH DAILY)



BIG PINEAPPLES 79c ea.
CHOICE BANANAS ** 1.99 kg **

SUPER SPECIAL "FLOWERS" \$2 BUNCH

MUSHROOMS \$2.49 kg	VIC LETTUCE 3 for \$1
CARROTS 15c kg	TOMATOES 99c kg
PARSNIPS 15c kg	ONIONS 29c kg
SWEDES 15c kg	

Est. 5 Yrs.

FREE DELIVERY

B&P HARRISON HARDWARE

73 MULGA RD, OATLEY WEST 57 2729

LOOK!!

OPEN 7 DAYS

40% OFF

BRITISH PAINTS (WHILE STOCK LAST)

Free Delivery



bankcard welcome here

WITHIN LOCAL AREA

PRINT MANDIT